

Theodicy Dilemma Flowchart – Page 1

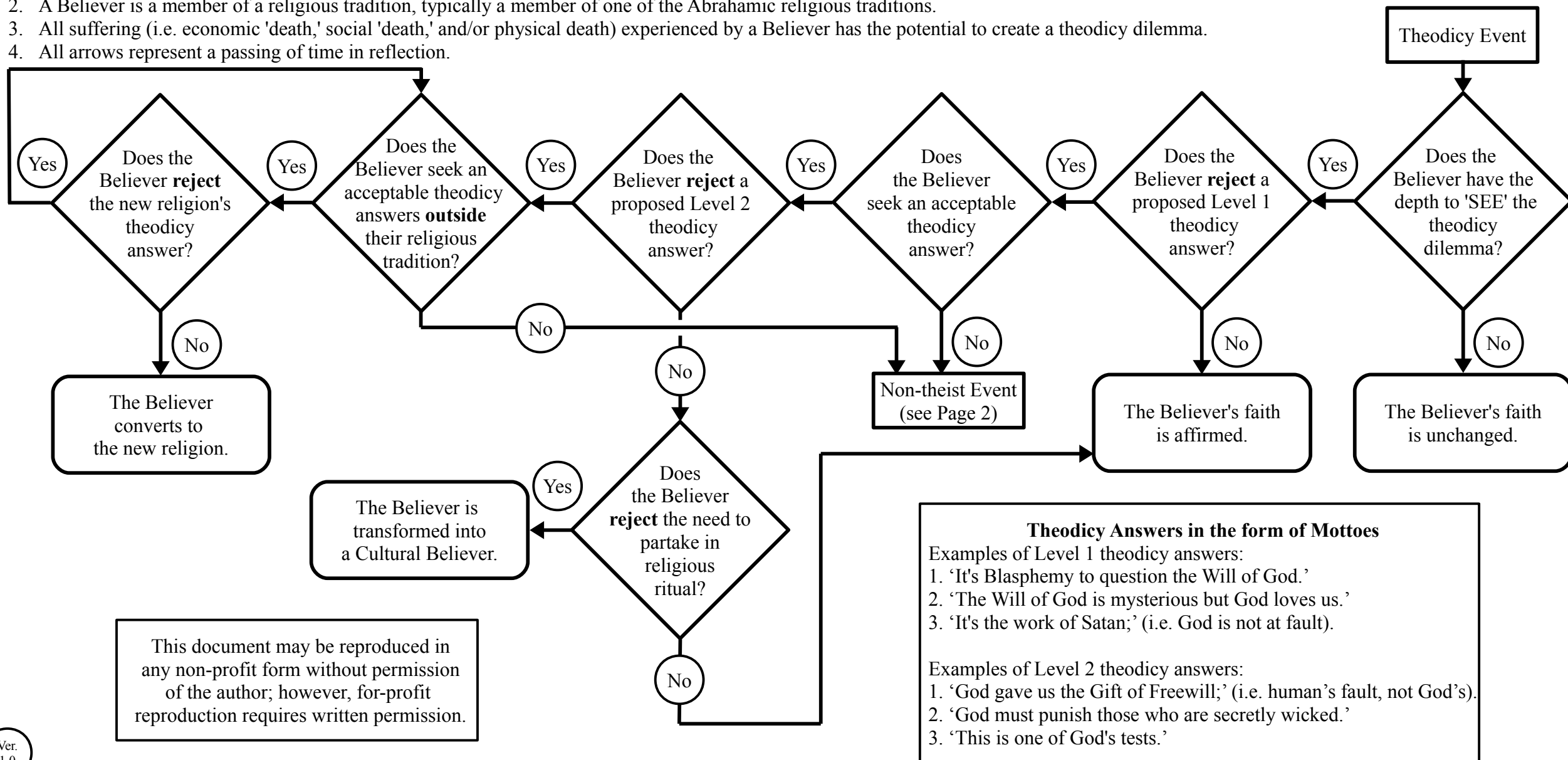
Supplemental material for *Sociology of religion: A critical primer*

© 2017 Dr. Walter A. Jensen, Ph.D

http://www.walterjensen.net/BK_02.htm

Assertions:

1. "... theodicy is *more* than the 'problem of evil,' it is an inquiry into *why* the Divine fails to interact with its creation in a productive, loving, and meaningful way " (Jensen 2015:16).
2. A Believer is a member of a religious tradition, typically a member of one of the Abrahamic religious traditions.
3. All suffering (i.e. economic 'death,' social 'death,' and/or physical death) experienced by a Believer has the potential to create a theodicy dilemma.
4. All arrows represent a passing of time in reflection.

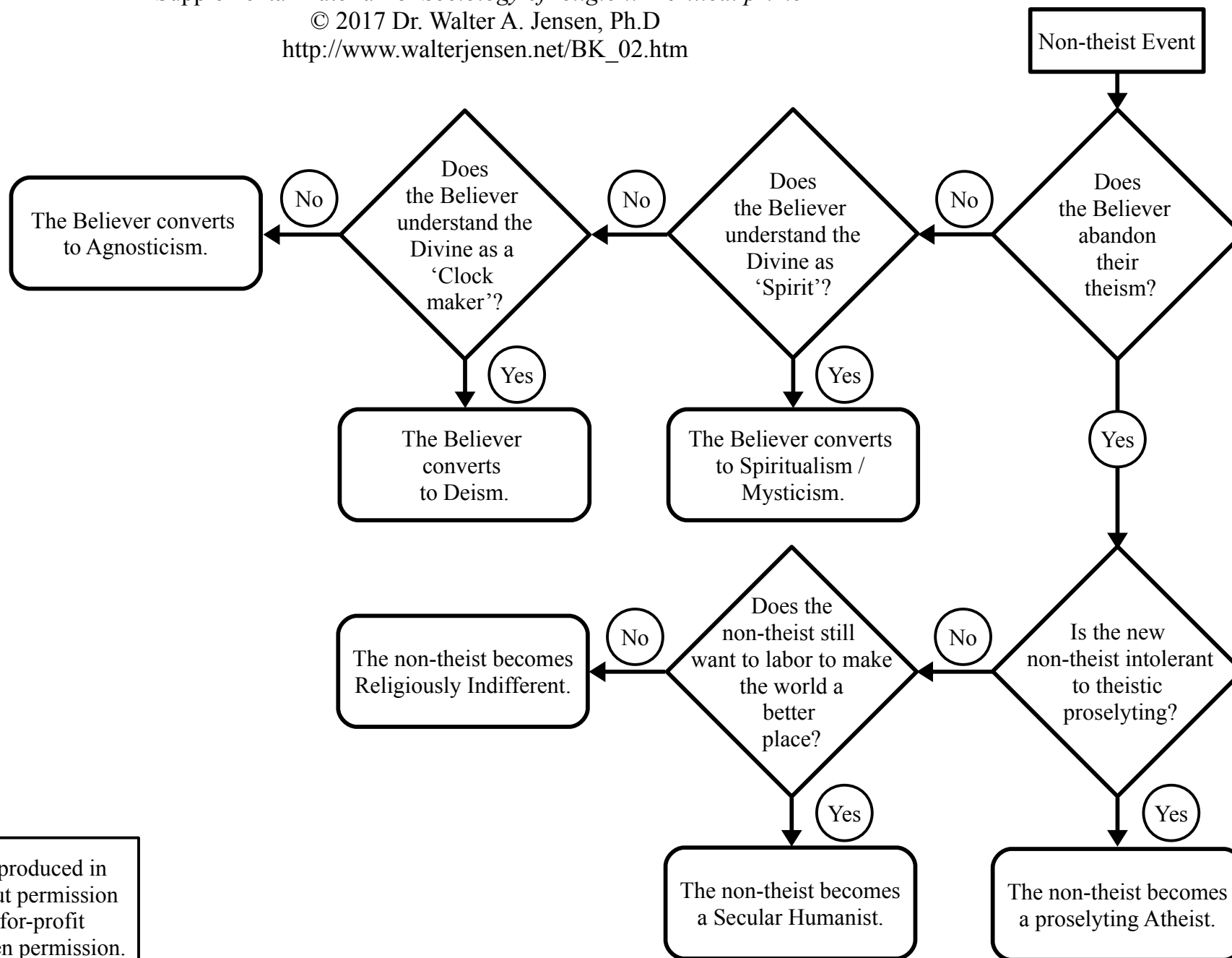


Theodicy Dilemma Flowchart – Page 2

Supplemental material for *Sociology of religion: A critical primer*

© 2017 Dr. Walter A. Jensen, Ph.D

http://www.walterjensen.net/BK_02.htm



This document may be reproduced in any non-profit form without permission of the author; however, for-profit reproduction requires written permission.